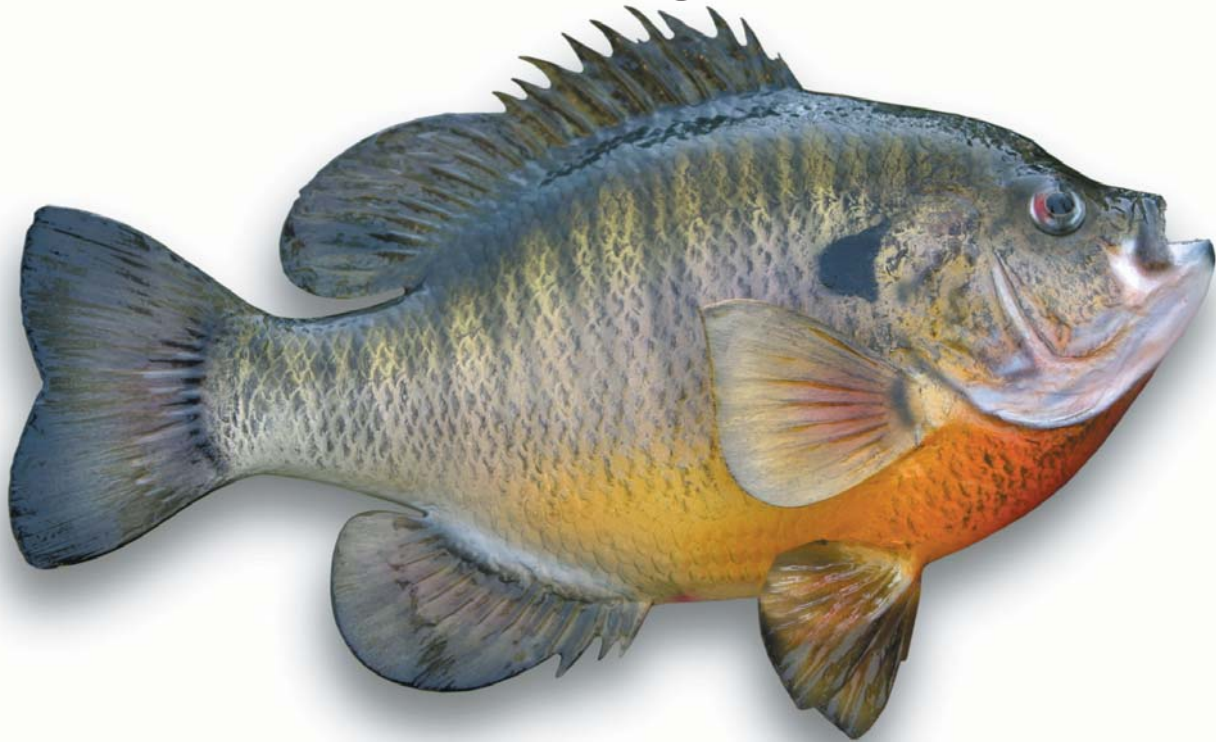
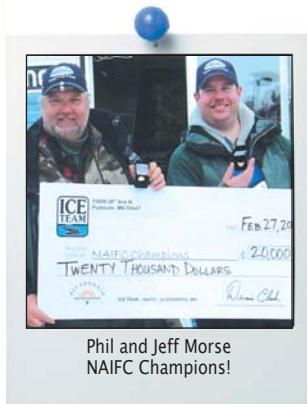


Quality Fishing Tackle



of the professionals



Phil and Jeff Morse
NAIFC Champions!



Captian's Joe Pikulski & Myron
Gilbert NAIFC Champions. Team
of the Year - four years in a row!



Tony Boshold and Mike McNett
NAIFC Champions



fiskas.se



FISKAS Balances

FISKAS Balances are available in the body styles below. Unless noted, each Balance model is available in all 15 fish-catching color patterns.

| | | | |
|---|---|---|--|
| <p>N02 #10 Orange Spot ←→1.2cm ●1.0gr</p>  <p>2, 5, 6, 9, 10, 12, 15</p> | <p>N05 #09 Orange ←→1.3cm ●1.2gr</p>  | <p>N09 #01 Perch ←→1.5cm ●3.0gr</p>  | <p>N13 #08 Yellow Spot ←→1.2cm ●1.2gr</p>  |
| <p>N23 #06 Glow ←→2.2cm ●2.6gr</p>  | <p>N24 #12 Parrot ←→0.7cm ●0.4gr</p>  | <p>N25 #12 Parrot ←→2.1cm ●1.5gr</p>  | <p>N29 #03 Blue Spot ←→2.2cm ●5.1gr</p>  |
| <p>N30 #15 Black ←→1.2cm ●1.0gr</p>  | <p>N31 #07 Green Yellow ←→1.2cm ●1.2gr</p>  | <p>N36 #01 Perch ←→2.2cm ●5.0gr</p>  | <p>N37 #13 Red Spot ←→2.0cm ●3.5gr</p>  |
| <p>N46 #03 Blue Spot ←→1.7cm ●2.3gr</p>  | <p>N47 #10 Orange Spot ←→1.2cm ●1.7gr</p>  | <p>N59 #10 Orange Spot ←→1.8cm ●1.6gr</p>  | <p>N60 #12 Parrot ←→1.8cm ●1.6gr</p>  |

BALANCE COLOR PATTERNS



- 01 Perch
- 02 Blue
- 03 Blue Spot
- 04 Brown
- 05 Clown
- 06 Glow ◆
- 07 Green Yellow
- 08 Yellow Spot
- 09 Orange
- 10 Orange Spot
- 11 Oran White
- 12 Parrot
- 13 Red Spot
- 14 Red White
- 15 Black

Photos of balances are actual size.

FISKAS Swimmers

N61 Color shown 05 Clown 1, 3, 5, 10, 12, 15



N58 Color shown 03 Blue Spot



N55 Color shown 10 Orange Spot



N56 Color shown 03 Blue Spot



N57 Color shown 01 Perch



With "sticky sharp" hooks on each end, this model N24 Balance is one of our most popular lures for panfish and is available in all 15 colors above.



Small, yet mighty, a 3mm E71 Schoolbus Yellow Wolfram Jig caught this nice walleye.



Wolfram Jigs

FISKAS Wolfram Jigs are made from Tungsten. Fish HEAVY with smaller lures! Our jigs are designed at a 45 degree angle for great action and "Sticky Sharp" hooks for the best hook set! Choose from three finishes with each color model available in several body sizes. Order by model and size for example: HP49-4 is a 4mm Green Glow HandPainted Wolfram Jig.

HANDPAINTED



Models HP31-HP41
Sizes: 2, 3, 4, 5 & 6mm

SIZE CHART

| Size | Hook Weight | |
|------|-------------|--|
| 2mm | 20 0.2gr | |
| 3mm | 16 0.5gr | |
| 4mm | 14 1.0gr | |
| 5mm | 12 1.8gr | |
| 6mm | 10 2.7gr | |

Note: Epoxy jigs will be slightly larger than handpainted and metallic.

HANDPAINTED-2



Models HP42-HP59
Sizes: 2.5, 3, 4, & 5mm

EPOXY



Models E61-E74
Sizes: 3, 4, 5 & 6mm

METALLIC



GB81-GB85: 3, 4, 5 & 6mm;
ANTZ: 3, 4 & 5mm;
GH: 3, 4 & 5mm

WOLFPACKS

Finding it hard to make a decision on which Wolfram Jigs to order? We can help you by packaging 6 top selling lures into a pack with a special price. Each WOLFPACK contains 6 fish catching colors. Order by Wolfram finish and size:

- Handpainted (WPH3, -4, -5)
- Handpainted-2 (WP2H3, -4, -5)
- Epoxy 3 (WPE3, -4, -5)
- Glow (WPG3, -4, -5)
- Metallic (WPM3, -4, -5)



WP2H

Capt. Joe Pikulski NAIFC
Champion caught this 11",
1lb.7oz. bluegill using a
Fiskas Yellow Epoxy E65 jig





Little Atom Lures

Lures/Jigs are available in multiple hook sizes and colors.

PUR "Purist"
Shown: #08 Blood Red



| Hook Size | Color Available |
|-----------|-------------------------------|
| PUR-06 | #1-4, 6-19 |
| PUR-08,10 | #1-4, 6-19, 12, 71-73, 93, 94 |

BPR "Barbless Purist"
Shown: #73 Blk Yellow



| Hook Size | Color Available |
|------------|--------------------------|
| BPR-10, 12 | #1-4, 6-19, 71-73, 93,94 |

REM "Rembrandt"
Shown: #14 Grape



| Hook Size | Color Available |
|--------------------|--------------------------|
| REM-02, 04, 06, 08 | #1-4, 6-19, 71-73, 93,94 |

RAT "Rat Finkie"
Shown: #01 Pink



| Hook Size | Color Available |
|--------------------|--|
| RAT-04, 06, 08 | #1-4, 6-19, 71-73, 83, 93-96 |
| RAT-10, 12, 14, 16 | #1-4, 6-24, 28, 51-58, 64,71-73, 83, 93-96 |

STL "Stealth"
Shown: #72 Blk/Or



| Hook Size | Color Available |
|-----------|--------------------------|
| STL-10 | #16-19, 71-78, 89, 93,94 |

SLK "Silkworm"
Shown: #14 Grape



| Hook Size | Color Available |
|-----------|------------------|
| SLK-12 | #7, 8, 14, 15-19 |

DUP "Duppie"
Shown: #74 Blk Grape



| Hook Size | Color Available |
|-----------|---------------------------|
| DPJ-12 | #17, 19, 74, 78, 84 93-96 |

BUG "Bugeye"
Shown: #06 Blue



| Hook Size | Color Available |
|-----------|---------------------|
| BUG-12 | #2, 3, 6, 10, 15,42 |

MEG "Mega Glow"
Shown: #93 Fl. Char/Or



| Hook Size | Color Available |
|------------|------------------------|
| MEG-10, 12 | #71, 78, 84, 93, 94,96 |

OPT "Optic"
Shown: #94 Gr. Chartr



| Hook Size | Color Available |
|-------------|----------------------|
| OPT-06, 08, | #16-19, 71-73, 93-94 |
| OPT-10, 12, | #16-19, 50, 71-78, |
| 14, 16 | 93,94 |

RIR "Red Ice Rocker"
Shown: #96 Pink White



| Hook Size | Color Available |
|------------|-----------------|
| RIR-08, 10 | #73,74, 93-96 |

RIS "Red Ice Shmoe"
Shown: #95 Chart White



| Hook Size | Color Available |
|-------------|-----------------|
| RIR-08, 10, | #73,84, 93-96 |

RIT "Red Ice Teardrop"
Shown: #94 Gr. Chartr



| Hook Size | Color Available |
|-----------|-----------------|
| RIT-10,12 | #73,74, 93-96 |

SHM "Shmoe Spoon"
Shown: 72 Blk/Org



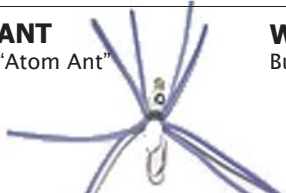
| Hook Size | Color Available |
|-------------|-----------------|
| SHM-08, 10, | #16-19, 71-73, |
| 12, 14 | & 93-96 |

TTR "Teeter"
Shown: #08 Blood Red



| Hook Size | Color Available |
|-----------|-------------------------------|
| TTR-10, | #3, 8, 15, 73, 84, 93, 94, 96 |
| TTR-12 | #3, 8, 15, 73, 84, 93, 94, 96 |

ANT "Atom Ant"



| Hook Size | Color Available |
|-----------|------------------------|
| ANT-10 | #7, 24, 78, 84, 93, 94 |

WEB "Winged Epoxy Bug"
Shown: #01, #05



| Hook Size | Color Available |
|-----------|-----------------|
| WEB-12 | #1, 3-6, 14, 43 |

SDL "SD Wing Larva"
Shown: #01, #03



| Hook Size | Color Available |
|-----------|-----------------|
| SDL-12 | #1-5 |

KNK "Knacker"
Shown: #93 Orange/
Fl. Chartreuse



| Hook Size | Color Available |
|-----------|-----------------|
| KNK-18 | #16-18, 74 |
| KNK-25 | #73, 74, 93-96 |

PNK The Original "Pinkie"
Shown: #85 Pink Chartr



| Hook Size | Color Available |
|-----------|-----------------|
| PNK-12 | #85, 95,96 |

LURE COLOR CHART

| | |
|----------------|------------------|
| 01 Hot Pink | 53 Gold Chartr |
| 02 Hot Orange | 54 Gold Green |
| 03 Hot Chartr | 55 Gold White |
| 04 Hot Green | 57 Gold Black |
| 06 Blue | 58 Gold Red |
| 07 Black | 62 Motor Oil |
| 08 Blood Red | 64 Gold Purple |
| 11 Mud Brown | 68 Bubble Gum |
| 12 White | 71 Black Pink |
| 14 Grape | 72 Black Orange |
| 15 Glow | 73 Black Chart |
| 16 Glow Pink | 74 Black Purple |
| 17 Glow Orange | 78 Black Red |
| 18 Glow Chartr | 83 Pink Chartr |
| 19 Glow Green | 84 Pink Purple |
| 24 Glow Purple | 85 Pink Yellow |
| 26 Glow Blue | 86 Pink Brown |
| 28 Glow Red | 89 Yellow Red |
| 40 Silver | 93 Orange Chartr |
| 43 Clear | 94 Green Chartr |
| 50 Gold | 95 Chartr White |
| 51 Gold Pink | 96 Pink White |
| 52 Gold Orange | |

Glow Chargers



The SUPER Glow Charger (SGC-71) with 21 powerful Ultra Violet LED's will charge all of your glow lures, and is especially efficient in charging the new Little Atom Atomic Glow plastic tails. The SUPER Glow Charger uses three AAA batteries (included) with 21 powerful LED's emitting a barrage of UV light.



The Atomic Glow Charger (AGC-71) is the original 12 LED Ultra Violet light. The Atomic Glow Charger will charge all glow lures and plastics. Uses 3 AAA batteries (included), on/off switch, hand lanyard and a one-year warranty.

MODELS

SGC-071 21LED Super Glow Charger

AGC-071 12LED Atomic Glow Charger



Plastic Tails

Super soft plastic tails for superior sensitivity and quick action. All tails are impregnated with a special C-9 Scent Formula. Plastics available in assorted colors, Duppies model is the only model that comes in available in all colors and two-tone colors. 2-tone colors are listed "head color/split tails color". See Color Chart (left).

PLASTICS COLOR CHART

- 01 Hot Pink
- 02 Hot Orange
- 03 Hot Chartre
- 04 Hot Green
- 06 Blue
- 07 Black
- 08 Blood Red
- 11 Mud Brown
- 12 White
- 14 Grape
- 15 Glow
- 62 Motor Oil
- 68 Bubble Gum
- 13 Pink White
- 16 Glow Pink
- 17 Glow Orange
- 19 Glow Green
- 24 Glow Purple
- 26 Glow Blue
- 28 Glow Red 44
- Purple/
Gold Fleck
- 47 Black/
Gold Fleck
- 60 Clear Multi
Fleck



Plastic Models

When ordering, order by model then color (ie: MNG-08 is Micro Nuggie Blood Red. (Dealers: All plastics sold in boxes of 12 pks)

WDG "Wedgie" 6pk
Colors: 1-12,14,15,
24-28, 44-68.

MNG "MicroNuggie" 6pk
Colors: 1-12,14,15,
24-28, 62-68.

NUG "Nuggie" 6pk
Colors: 1-12,14,15,
24-28, 62-68.

JMB "JumboNuggie" 4pk
Colors: 1-12,14,15, 62-68.



TSR "Teaser" 6pk
Colors: 1-12,14,15,
62-68.

NDL "Noodle" 6pk
Colors: 1-12,14,15, 62-68.

SHR "Skimpies" 6pk
Colors: 1-12,14,15, 62-68.

SPG "Spidgie" 4pk
Colors: 1-12,14,15, 62-68.



71 Black/Pink

DUP "Duppie" 6pk
All colors available,
excluding 24, 26,28.

74 Black/Grape

MND "Micro Noodle" 4pk
Colors: 1-12,14,15, 62-68.

94 Green/Chartre



Little Atom Krazy Dust



Use Krazy Dust to change your favorite live bait to a vibrant color with the added punch of our secret C9 formula. Simply remove your bait from its bedding, add Krazy Dust and let set overnight at room temperature then return your colored bait to its bedding and LETS GO FISHING!

DUST COLORS: KD-POD Sample of 6-Assorted Colors
KD-01 Hot Pink; **KD-02** Hot Orange; **KD-03** Hot Chartreuse
KD-04 Hot Green; **KD-06** Blue; **KD-08** Blood Red; **KD-14** Purple

C-9 Scent

Due to many requests from anglers, Little Atom has now made available for sale the famous C-9 scent in liquid form. For best results, use C-9 scent ONLY with Little Atom brand super-soft plastic tails. Little Atom's C-9 scent contains natural anise, use sparingly. Each bottle contains 1 fl. oz of C-9 liquid scent with dropper top for easy application, priced per bottle.



Icegator Ice Augers



If you tournament fish and need to put over 100 holes through the ice to locate fish, without spending your day doing it, you need a Icegator! If you fish for perch and need to move around to stay up with the perch, you need a Icegator! If you're fishing from the Ice House and want to run on 12 volts from your marine battery, with the lightest drive in the world, and the only drive that removes the slush, you need a Icegator! If you pleasure fish with your family and want an enjoyable day of fishing, where you no longer need to choke the life out of ice auger, or pull your guts out trying to get it started, or smell all those gas fumes, you need a Icegator! Where the power is instant, where there is no smell, where you have more battery life then you'll ever need, a reverse for power cleaning the hole, and speed that is simply unmatched. All who have seen with their own eyes know there is only one choice ICEGATOR. Seeing is believing.



*IGC IceGator "Competitor"



*IGA IceGator "Attacker"



*IGS IceGator "Seeker"

*Powerhead only.

Schooley Ice Reels

Tired of waiting for your lure to stop spinning? Use the reel of ice fishing professionals! The Schooley level wind reel is a virtually indestructible nylon reel with tension adjustment and a depth marking pin. Find the depth fish are feeding, put in the pin depth marker and you can keep returning to the same depth. Terrific for ice fishing. Order SCH-1001 today!



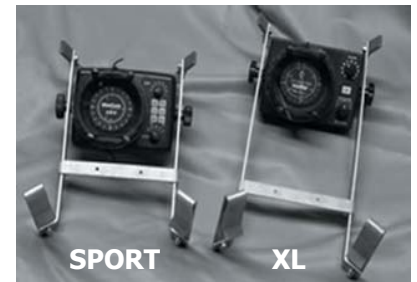
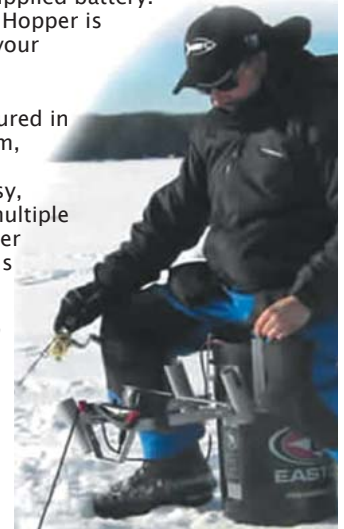
Sonic Ice Hopper

As seen on the CE MEN reality television show and used by professionals like National Ice Fishing Circuit Champions Capt. Joe Pikulski and Capt. Myron Gilbert. Designed for ice fishermen for the NAIFC tourney trail or those who just enjoy being on the frozen lake. Now you can get your own Sonic Ice Hopper to "make your sonar work for you". You don't have to leave your flasher behind on those quick little bucket and auger trips any more. Mount your Marcum or Vexilar flasher right on your favorite bucket with the Sonic Ice Hopper. The Ice Hopper system is balanced using the weight of your flasher's factory supplied battery. You CAN take it with you! The Ice Hopper is quickly and easily removed from your bucket for long hauls or stowage.

The Sonic Ice Hopper is manufactured in the USA from heavy gage aluminum, which securely holds any standard flasher for quick transport and easy, efficient viewing. It provides for multiple rod holder locations and transducer cable wrapping point. Two models are available; Sport and XL.

The Sonic Ice Hopper Sport is 4 1/2" shorter than the XL. The Sport carries with slightly less effort than the XL and takes up less space in your shelter.

The Sonic Ice Hopper XL is great for those fishermen with slightly larger frames and positions the flasher farther forward for more convenient viewing. Deluxe Model Includes:
 1 Sonic Ice Hopper bracket assembly
 1 custom lens cover*
 1 battery bag with suspension belt
 1 power cord extension
 3 rod holders
 * Please specify make and model of your flasher when ordering



**Flashers not included

MODELS

- SIHSP-12/20** "Sport" for Vexilar FL 12/20
- SIHSP-ALL** "Sport" for all other models
- SIHXL-12/20** "XL" for Vexilar FL 12/20
- SIHXL ALL** "XL" for all other models

Bug Luggage™

Baby Bug Luggage, fly and jig storage box has 68 elevated hook-holding stations. Dimensions: 4.15" x 3.4" x 1" Assorted colors. Pictures shown here show various Little Atom lures in the box for illustration purposes only, the lures do not come with the box.

Bug Luggage, fly and jig storage box has 136 elevated hook-holding stations. Dimensions: 6" x 4.25" x 1" Assorted colors. Pictures shown here show various Little Atom lures in the box for illustration purposes only, the lures do not come with the box. Bug Luggage comes with a 20-year warranty, 100% Made in the USA.



BBL Baby Bug Luggage™



BLG Bug Luggage™

ASSO Fishing Line

ICE HEAVY-50 YDS

Fluorocarbon is great for low temperatures. Line keeps its features almost unchanged even in the coldest weather conditions (-40°C). Heavier than nylon, helps your lure sink faster. High line visibility on ice, invisible below. 50 yards.

Fluor. Yellow ● Brown ●

Available Test:
2, 3, 4, & 6lb.



MICRON 3-50 YDS

Ultimate fluorocarbon technology with 100% consistency in diameter to within 3 microns. Clear color.

- Top Strength
- Ultra Sensitivity
- Extraordinary Sinking Speed
- Long Durability
- Resists Kinks
- 50 yards
- No Strength Loss
- Completely Impermeable

Available Test:
8oz, 12oz, 1, 1.5, 2, 3 & 4lb.

ICE FISHING-50 YDS

By mixing a special compound with the copolymer, we developed a specific line for fishing in cold weather conditions.

This special compound, ASSO ICE FISHING resists to freezing, does not become brittle, remains soft & retains most of its knot strength even in the most extreme conditions. High line visibility on ice.

Luminous Blue ●

Available Test: 1, 2, 3, 4, 5, 6, 8 & 10lb.



INVISIBLE ULTRALIGHT-50 YDS

Ultimate fluorocarbon in technology. Made in small lots to ensure 100% consistency in line diameter. Top strength and ultra sensitive. Extraordinary sinking speed. Long durability. Clear

Available Test:
8oz, 1 & 1.5lb.



FLUOROLIGHT-110 YDS

Thanks to its special fluorocarbon coating, Asso Fluorolight combines the following revolutionary characteristics:

- Unbelievable smooth surface for long and easy casting
- Outstanding breaking strength in water due to its waterproofness
- Superior abrasion resistance
- Thanks to the fact that it is fluorocarbon coated, Asso Fluorolight is very soft and its surface is incredibly skipping, allows you to perform long and precise casts.
- The line is completely impermeable, so it doesn't lose any strength in water.
- High visibility in air, low visibility in water
- The special white-blue colour makes it perfect for night fishing and for an accurate management of the fishing zone.

Luminous White Blue ●

Available Test: 2, 4, 6, 8 & 10lb.



TETRAMAX-110 YD!

By using the revolutionary Asso Tetramax, you can stop trading off some features for others while using a line: all the characteristics of the perfect reel monofilament are combined in this single product!

Asso Tetramax is specifically developed for superior abrasion resistance. Thanks to the new compound "4 in 1", which is actually mixed in the copolymer and not just used as a coating material (which would not last long), you can have the following four features at the same time, a fact that until now was unimaginable for a single line:

Superior abrasion resistance (6-8 times higher than any conventional line)
No memory and great softness
Low stretch High knot strength.

Luminous White Blue ●

Available Test: 2, 4, 6, 8 & 10lb.



SUPER HIGH TENACITY- 110 YDS

In most of fishing conditions, there is one feature that stands above all the rest: STRENGTH!

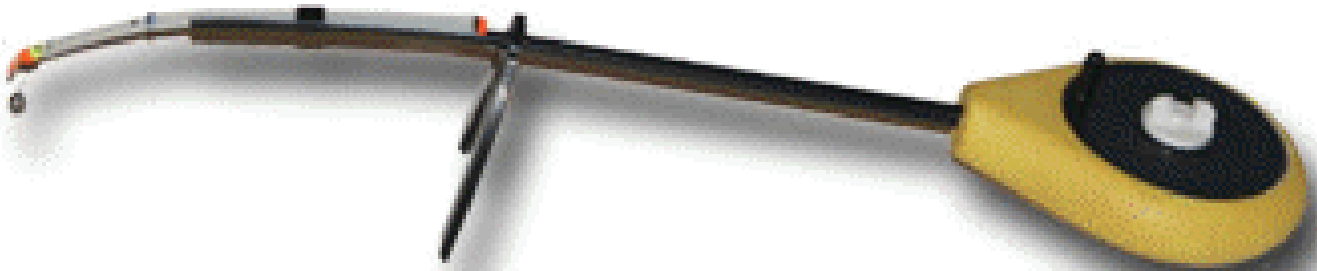
ASSO Super H.T. (Super High Tenacity) is the line for the angler who considers strength the most important feature in a fishing line! Gruppo DP has engineered Asso S.H.T. to stand up and perform under the hardest conditions, concentrating on the various components of strength in a fishing line:

- Tensile strength
- Knot strength
- Impermeability
- Impact resistance
- Abrasion resistance

Fluor. Yellow ● Moss Green ●

Available Test: 2, 3, 4, 5, 6, 8, 10 & 12lb.

Palm Rods & Strike Indicators



N99 Fiskas Palm Rods are used for competition fishing in the Nordic Regions. The line spool is in the handle and the rod blank accommodates the Fiskas Strike Indicators. These Palm Rods allow you to sense the slightest bite. Made for Wolfram Jigs and smaller Fiskas Balances you can match the weight of your lure to one of the several strike indicators. These rods are fish catching machines. Best suited for fishing shallow to 20 foot depths.

SB-01 For Wolfram Jigs up to size 5mm, or Balances <1.8 grams



SB-02 For Wolfram Jigs up to size 5mm, or Balances <1.8 grams



SB-03 For Wolfram Jigs up to size 6mm, or Balances <3 grams



SB-04 For Wolfram Jigs up to size 5mm, or Balances <1.8 grams



SB-13 For Wolfram Jigs up to size 3mm, or Balances <0.8 grams

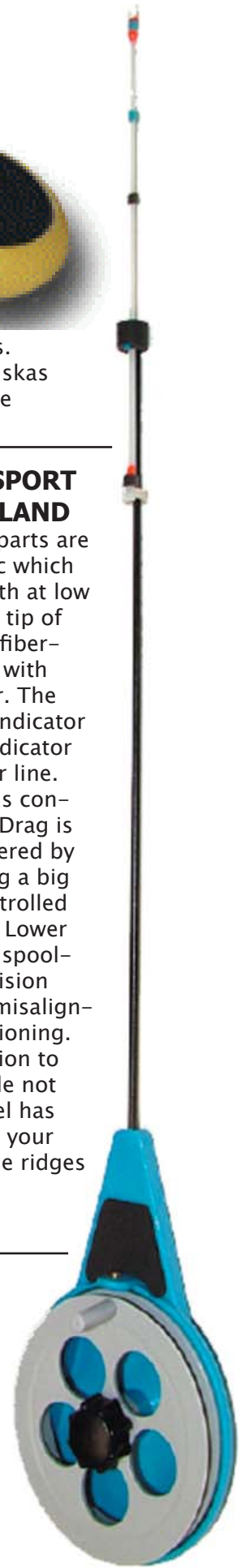


SB-18 Replacement strike indicator for Jonttu Sport Rod (shown right)



N102 JONTTU SPORT ROD FROM FINLAND

The body and reel parts are made of ABS plastic which retains high strength at low temperatures. The tip of the rod is made of fiberglass and outfitted with a sensible indicator. The working length of indicator can be adjusted. Indicator has 2 rings for your line. The drum braking is continuously variable. Drag is automatically triggered by the strike or playing a big fish. Braking is controlled by turning the rod. Lower the rod tip for free spooling. The high precision parts prevent reel misalignment and malfunctioning. Foam storage section to hook your lure while not in use. Back of reel has molded ridges, run your fingernail across the ridges to add vibration and jig play.



4 EASY WAYS TO ORDER


Mail-in
Order Form


Toll-free Fax
866.485.7157


Online
Shopping Cart


Phone 734.277.4110
M-F 6pm-10pm
Weekends 10am-10pm

YOUR BOBBERS DOWN, INC. Saline, Michigan **YOURBOBBERSDOWN.COM**